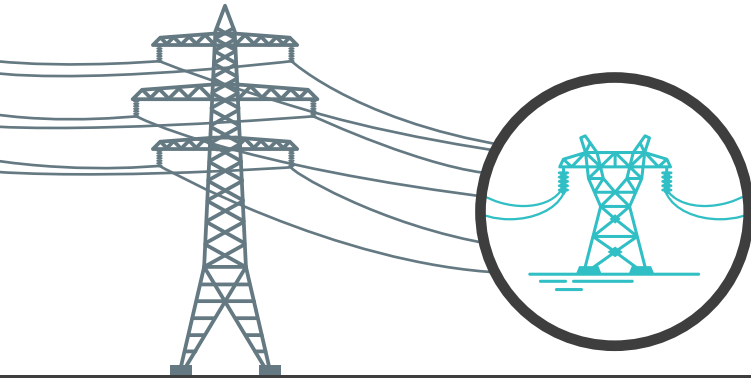


# The Steps to Restoring Power

When a major outage occurs, our crews restore service to the greatest number of people in the shortest time possible - until everyone has power.



## 1. High-Voltage Transmission Lines

These lines carry large amounts of electricity. They rarely fail but must be repaired first.



## 2. Distribution Substations

Crews inspect substations, which can serve hundreds or thousands of people.



## 3. Main Distribution Lines

Main lines serve essential facilities like hospitals and larger communities.



## 4. Individual Homes and Businesses

After main line repairs are complete, we repair lines that serve individual homes and businesses.